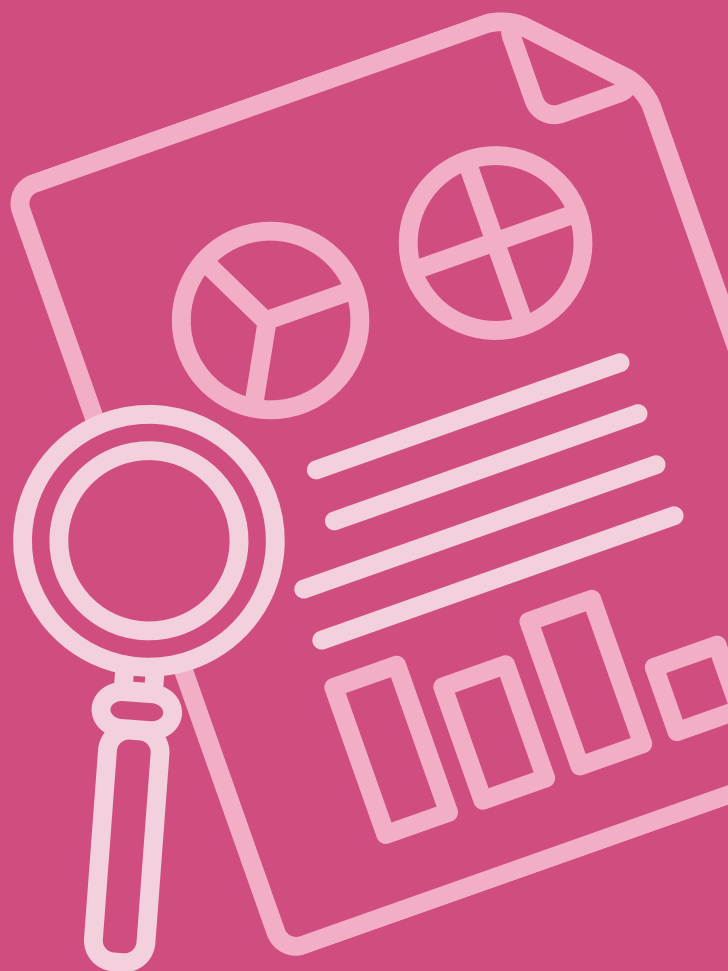


CAMMA APRESENTA

# CADERNO CIENTÍFICO

**INDICAÇÕES MENSAIS  
DOS ARTIGOS CIENTÍFICOS  
MAIS RELEVANTES  
PUBLICADOS.**



SPERARE



**COVID reinfections are unusual — but could still help the virus to spread**

**([doi.org/10.1101/2021.01.13.21249642](https://doi.org/10.1101/2021.01.13.21249642))**

**Longitudinal Associations of Blood Phosphorylated Tau181 and Neurofilament Light Chain With Neurodegeneration in Alzheimer Disease**

**([doi:10.1001/jamaneurol.2020.4986](https://doi.org/10.1001/jamaneurol.2020.4986))**

**Metabolic surgery versus conventional medical therapy in patients with type 2 diabetes: 10-year follow-up of an open-label, single-centre, randomised controlled trial**

**([doi: 10.1016/S0140-6736\(20\)32649-0](https://doi.org/10.1016/S0140-6736(20)32649-0))**

**Incidence of Transient Ischemic Attack and Association With Long-term Risk of Stroke**

**([doi: 10.1001/jama.2020.25071](https://doi.org/10.1001/jama.2020.25071))**

**Medication for Adolescents and Young Adults With Opioid Use Disorder**

**(PMID: 33485735)**

**Why is COVID-19 less severe in children? A review of the proposed mechanisms underlying the age-related difference in severity of SARS-CoV-2 infections**

**(PMID: 33262177)**

**Responses to academic stress mediate the association between sleep difficulties and depressive/anxiety symptoms in Chinese adolescents**

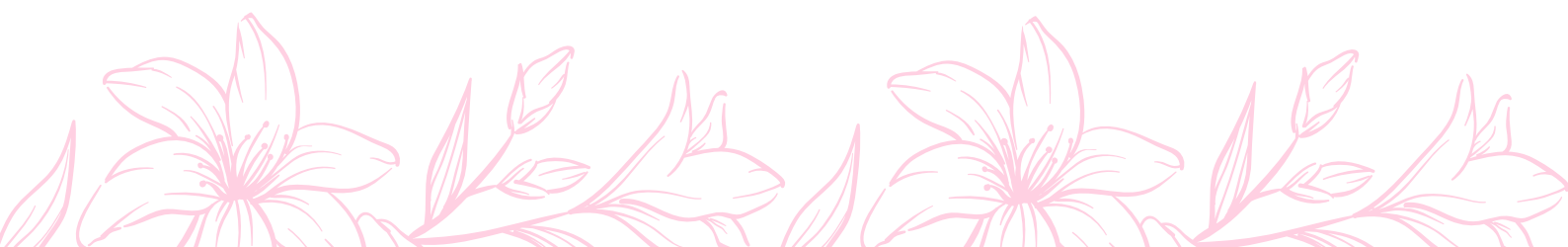
**(PMID: 31818801)**

**Artificial intelligence in drug Discovery: what is realistic, what are illusions? Part 1: Ways to make na impact, and why we are not there yet**

**(PMID: 33346134)**

**Consensus opinion on imune-mediated cytopenias after hematopoietic cell transplant for inherited metabolic disorders**

**(PMID: 33441980)**



# FEVEREIRO

The spectrum of kidney biopsies in hospitalized patients with COVID-19, acute kidney injury, and/or proteinúria  
[doi: 10.1093/ndt/gfab042](https://doi.org/10.1093/ndt/gfab042)

Cholangiocyte organoids can repair bile ducts after transplantation in the human liver  
[doi: 10.1126/science.aaz6964](https://doi.org/10.1126/science.aaz6964)

Coinfection with influenza A virus enhances SARS-CoV-2 infectivity  
[doi: 10.1038/s41422-021-00473-1](https://doi.org/10.1038/s41422-021-00473-1)

Prevalence of mental health problems during the COVID-19 pandemic: A systematic review and meta-analysis  
[doi: 10.1016/j.jad.2020.11.117](https://doi.org/10.1016/j.jad.2020.11.117)

The Impact of Asthma and Chronic Obstructive Pulmonary Disease (COPD) on Patient-Reported Outcomes in Systemic Lupus Erythematosus (SLE)  
[doi.org/10.1002/acr2.11212](https://doi.org/10.1002/acr2.11212)

Monitoring of clonal evolution of acute myeloid leukemia identifies the leukemia subtype, clinical outcome and potential new drug targets for post-remission strategies or relapse  
[doi: 10.3324/haematol.2020.254623](https://doi.org/10.3324/haematol.2020.254623)

Updates in the management of chronic lymphocytic leukemia/small lymphocytic leucemia  
[doi: 10.1177/1078155219853030](https://doi.org/10.1177/1078155219853030)

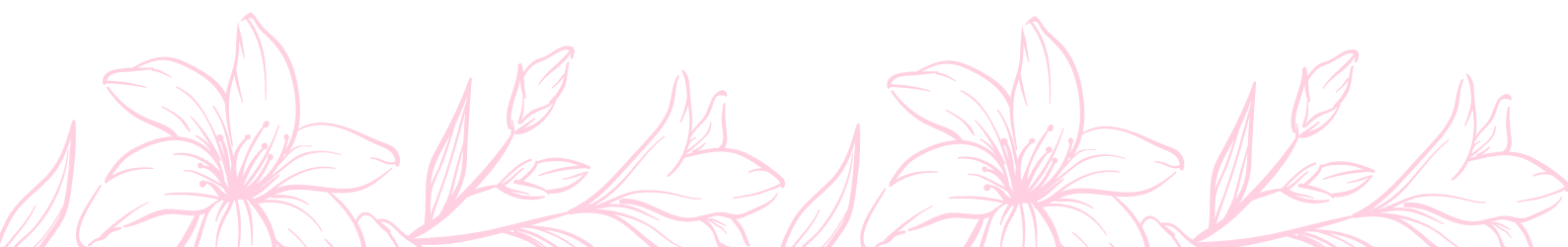
Total marrow and total lymphoid irradiation in bone marrow transplantation for acute leukaemia  
[doi: 10.1016/S1470-2045\(20\)30342-9](https://doi.org/10.1016/S1470-2045(20)30342-9)

Double unrelated umbilical cord blood vs HLA-haploidentical bone marrow transplantation: the BMT CTN 1101 trial  
[doi: 10.1182/blood.2020007535](https://doi.org/10.1182/blood.2020007535)

Long-term follow-up of a trial comparing post-remission treatment with autologous or allogeneic bone marrow transplantation or intensive chemotherapy in younger acute myeloid leukemia patients  
[doi: 10.3324/haematol.2019.221333](https://doi.org/10.3324/haematol.2019.221333)

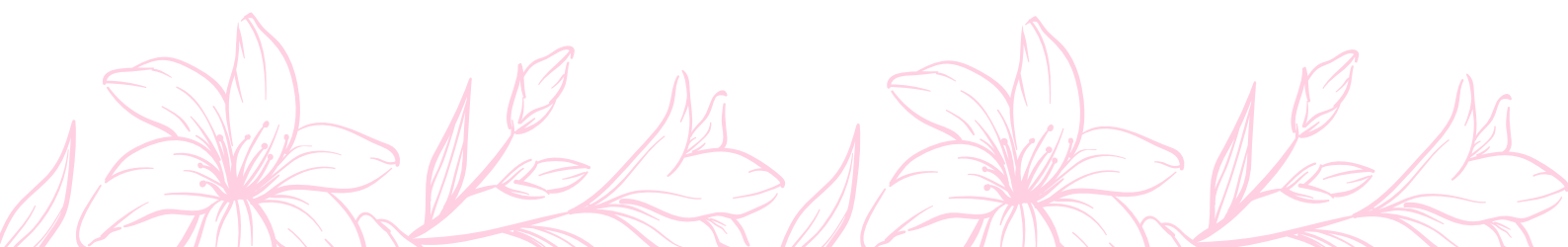


- Excessive exercise training causes mitochondrial functional impairment and decreases glucose tolerance in healthy volunteers  
PMID: 33740420
- Endometriosis and autoimmunity: Can autoantibodies be used as a non-invasive early diagnostic tool?  
PMID: 33722753
- Down's syndrome and COVID-19: risk or protection factor against infection? A molecular and genetic approach  
PMID: 33231770
- Alcohol use problems and opioid misuse and dependence among adults with chronic pain: The role of distress tolerance  
PMID: 32364397
- Once-Weekly Semaglutide in Adults with Overweight or Obesity  
PMID: 33567185
- Assessment of medication self-administration using artificial intelligence  
PMID: 33737750
- Effect of Ivermectin on Time to Resolution of Symptoms Among Adults With Mild COVID-19  
PMID: 33662102
- Risk of Suicide Attempt in Patients With Recent Diagnosis of Mild Cognitive Impairment or Dementia  
PMID: 33760039
- Antibiotic Stewardship in Pediatrics  
PMID: 33372120
- Multiclonal colorectal cancers with divergent histomorphological features and RAS mutations: one cancer or separate cancers?  
PMID: 32171651



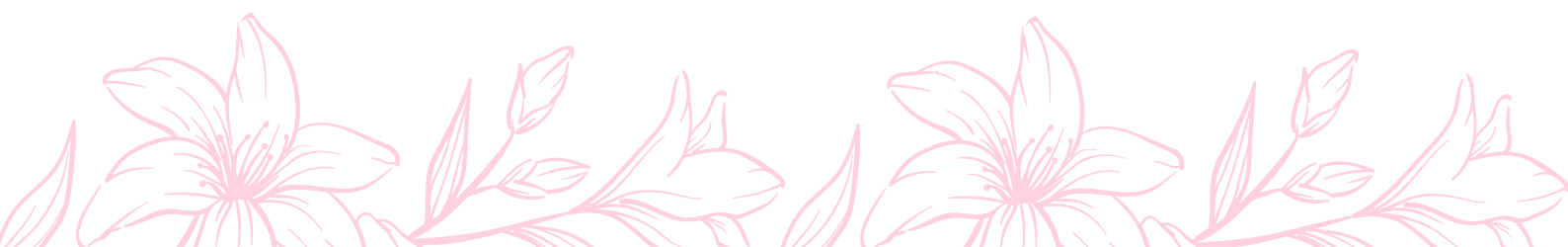
# ABRIL

- Vaccine development for emerging infectious diseases  
**PMID: 33846611**
- Acute Allergic Reactions to mRNA COVID-19 Vaccines  
**PMCID: PMC7941251**
- Preliminary Findings of mRNA Covid-19 Vaccine Safety in Pregnant Persons  
**PMID: 33882218**
  - Tocilizumab in Hospitalized Patients with Severe Covid-19 Pneumonia  
**DOI: 10.1056/NEJMod2028700**
- Call to Action: Structural Racism as a Fundamental Driver of Health Disparities: A Presidential Advisory From the American Heart Association  
**PMID: 33170755**
- Evidence for the Model of Gender Affirmation: The Role of Gender Affirmation and Healthcare Empowerment in Viral Suppression Among Transgender Women of Color Living with HIV  
**PMID: 31144131**
- To the point: gender differences in the obstetrics and gynecology clerkship  
**PMID: 29852154**
- Emergency management of the paediatric patient with convulsive status epilepticus  
**PMID: 33552322**



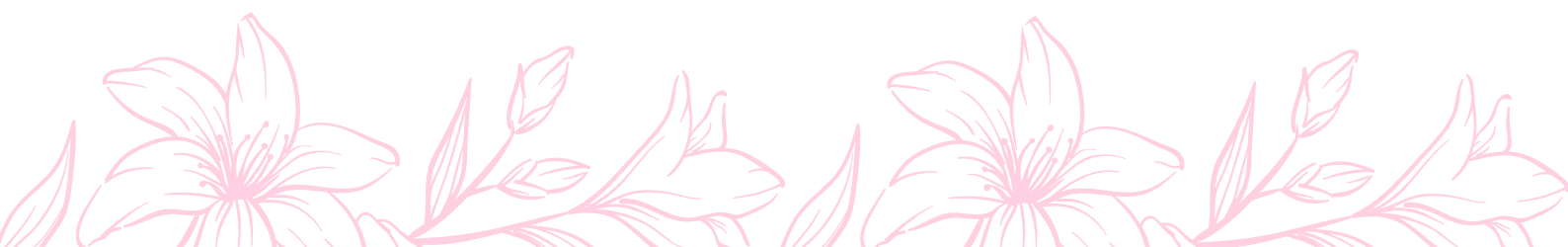
# MAIO

- Preliminary Findings of mRNA Covid-19 Vaccine Safety in Pregnant Persons  
DOI: [10.1056/NEJMoa2104983](https://doi.org/10.1056/NEJMoa2104983)
- Bullshit Ability as an Honest Signal of Intelligence  
DOI: [10.1177/14747049211000317](https://doi.org/10.1177/14747049211000317)
- Delay of Pregnancy Among Physicians vs Nonphysicians  
DOI: [10.1001/jamainternmed.2021.1635](https://doi.org/10.1001/jamainternmed.2021.1635)
- Association of Age, Antipsychotic Medication, and Symptom Severity in Schizophrenia With Proton Magnetic Resonance Spectroscopy Brain Glutamate Level  
DOI: [10.1001/jamapsychiatry.2021.0380](https://doi.org/10.1001/jamapsychiatry.2021.0380)
- Association Between Vaccination With BNT162b2 and Incidence of Symptomatic and Asymptomatic SARS-CoV-2 Infections Among Health Care Workers  
DOI: [10.1001/jama.2021.7152](https://doi.org/10.1001/jama.2021.7152)
- 6-month neurological and psychiatric outcomes in 236,379 survivors of COVID-19: a retrospective cohort study using electronic health records  
PMID: [33836148](https://pubmed.ncbi.nlm.nih.gov/33836148/)
- Screening for Suicide Risk in Hospital Admissions: What are the Next Questions?  
PMID: [34023060](https://pubmed.ncbi.nlm.nih.gov/34023060/)
- Pregnancy after CMV infection following uterus transplantation: A case report from the Dallas Uterus Transplant Study  
PMID: [34038016](https://pubmed.ncbi.nlm.nih.gov/34038016/)
- Acceptability and Use of a Dual HIV/Syphilis Rapid Test and Accompanying Smartphone App to Facilitate Self – and partner – Testing Among Cisgender Men and Transgender Women Who Have Sex With Men  
PMID: [34037931](https://pubmed.ncbi.nlm.nih.gov/34037931/)
- A Call for LGBTQ Content in Graduate Medical Education Program Requirements  
PMID: [34031304](https://pubmed.ncbi.nlm.nih.gov/34031304/)



# JUNHO

- Triple vs Dual Inhaler Therapy and Asthma Outcomes in Moderate to Severe Asthma: A Systematic Review and Meta-analysis  
[doi:10.1001/jama.2021.7872](https://doi.org/10.1001/jama.2021.7872)
- Sperm Parameters Before and After COVID-19 mRNA Vaccination  
[doi:10.1001/jama.2021.9976](https://doi.org/10.1001/jama.2021.9976)
- Obesity accelerates hair thinning by stem cell-centric converging mechanisms  
[doi: 10.1038/s41586-021-03624-x](https://doi.org/10.1038/s41586-021-03624-x)
- Biomarkers for neurodegenerative diseases  
[doi: 10.1038/s41591-021-01382-x](https://doi.org/10.1038/s41591-021-01382-x)
- Contemporary radiotherapy: present and future  
[doi: 10.1016/S0140-6736\(21\)00233-6](https://doi.org/10.1016/S0140-6736(21)00233-6)
- Comparison of COVID-19 Vaccine Approvals at the US Food and Drug Administration, European Medicines Agency, and Health Canada.  
[PMID: 34170306](https://pubmed.ncbi.nlm.nih.gov/34170306/)
- Impact of Pediatric Obesity on Diurnal Blood Pressure Assessment and Cardiovascular Risk Markers.  
[PMID: 33748038](https://pubmed.ncbi.nlm.nih.gov/33748038/)
- Diagnosis and management of migraine in ten steps.  
[PMID: 34145431](https://pubmed.ncbi.nlm.nih.gov/34145431/)
- Neonatal Birth Trauma- Analysis of Yearly Trends, Risk Factors, and Outcomes.  
[PMID: 34242670](https://pubmed.ncbi.nlm.nih.gov/34242670/)
- 7-1-7: an organising principle, target, and accountability metric to make the world safer from pandemics.  
[PMID: 34242563](https://pubmed.ncbi.nlm.nih.gov/34242563/)



- ·Effectiveness of Covid-19 Vaccines against the B.1.617.2 (Delta) Variant  
DOI: [10.1056/NEJMoA2108891](https://doi.org/10.1056/NEJMoA2108891)
- ·Initial Management of Seizure in Adults  
DOI: [10.1056/NEJMcP2024526](https://doi.org/10.1056/NEJMcP2024526)
- ·Vitamin D supplementation and COVID-19 risk: a population-based, cohort study  
DOI: [10.1007/s40618-021-01639-9](https://doi.org/10.1007/s40618-021-01639-9)
- ·Long-Term Complications in Youth-Onset Type 2 Diabetes  
DOI: [10.1056/NEJMoA2100165](https://doi.org/10.1056/NEJMoA2100165)
- ·Duration of Adjuvant Aromatase-Inhibitor Therapy in Postmenopausal Breast Cancer  
DOI: [10.1056/NEJMoA2104162](https://doi.org/10.1056/NEJMoA2104162)
- ·Sperm Parameters Before and After COVID-19 mRNA Vaccination  
doi:[10.1001/jama.2021.9976](https://doi.org/10.1001/jama.2021.9976)
- ·Effectiveness of Mask Wearing to Control Community Spread of SARS-CoV-2  
doi:[10.1001/jama.2021.1505](https://doi.org/10.1001/jama.2021.1505)
- ·Alcohol consumption and câncer  
[doi.org/10.1038/d41591-021-00046-0](https://doi.org/10.1038/d41591-021-00046-0)
- ·A Trial of Hyperimmune Globulin to Prevent Congenital Cytomegalovirus Infection  
DOI: [10.1056/NEJMoA1913569](https://doi.org/10.1056/NEJMoA1913569)

